



Elevation 1

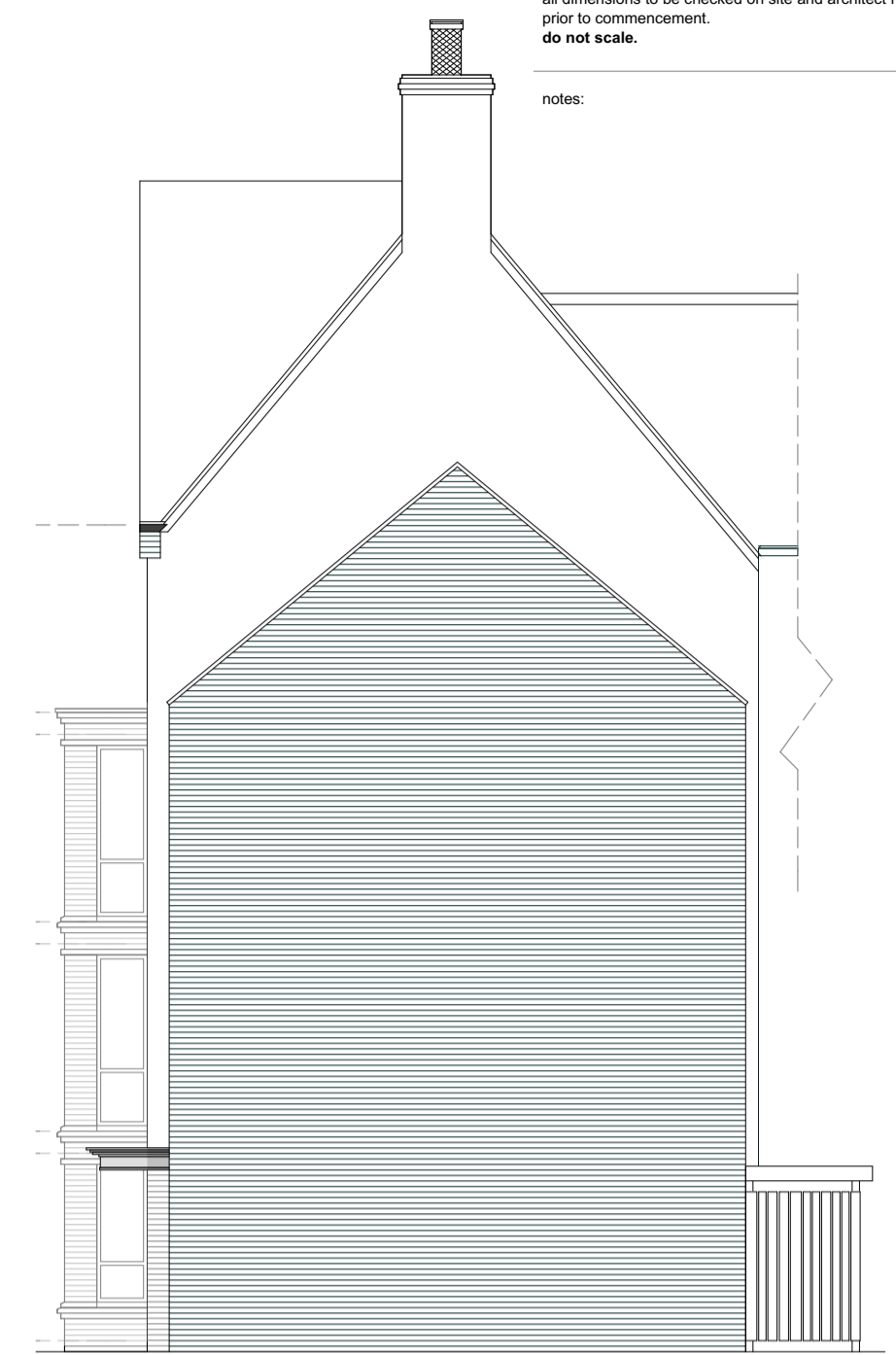
hatched area denotes looklike panel to half height window



Elevation 2

hatched area denotes looklike panel to half height window

obscure glazing obscure glazing



Elevation 5



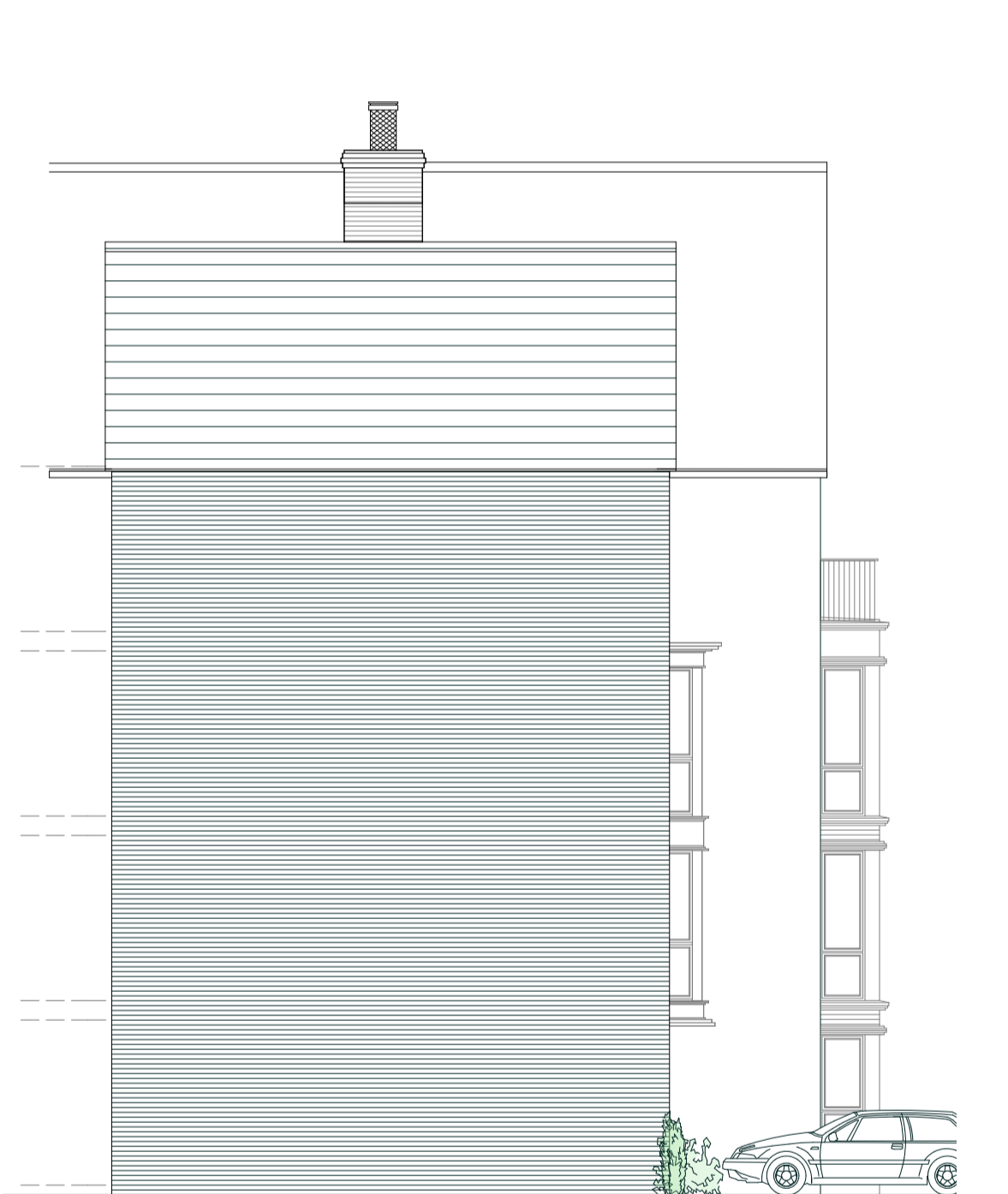
Elevation 3

obscure glazing

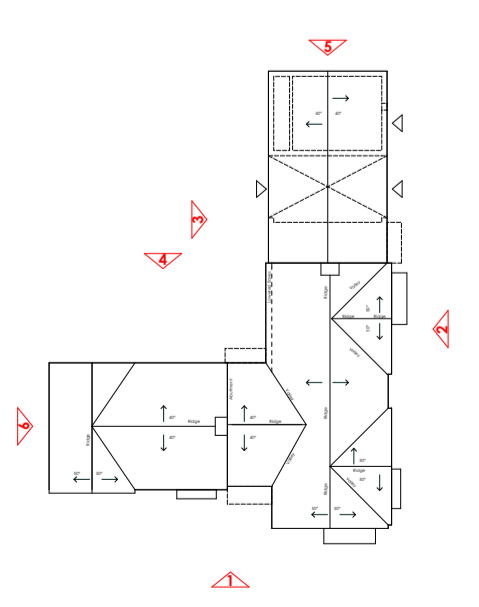


Elevation 4



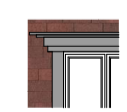
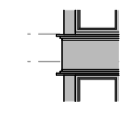





obscure glazing obscure glazing



Elevation 6

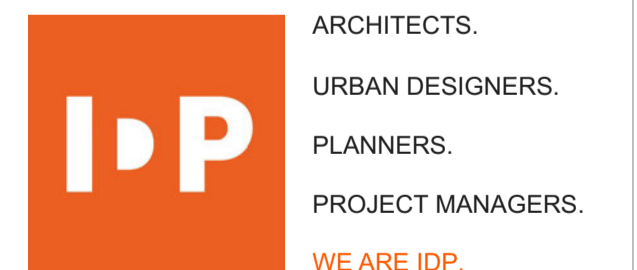


materials key

-  clay effect plain roof tiles
-  planar glass balustrade to balcony
-  grey grp feature domer window
-  light red facing brick
-  ppc aluminium bay window
-  dark red facing brick
-  metal railing to Juliette balcony
-  white render finish
-  grey aluminium glazing frame
-  grp entrance canopy

D	14.03.16	Roof finish amended.	SKT	SKT
C	25.11.15	Roof and window amendments	BDF	BDF
B	20.11.15	General revision	AKK	SKT
A	11.11.15	Rear elevations added.	SKT	SKT

rev: date: comment(s): name: check:



status: **PLANNING** RIBA Stage: **3**

client: David Wilson Homes

job: Wokingham Town Centre

title: Block D Elevations

drawn: SKT date: 20.10.15

checked: SKT scale @ a1: 1:100

job no: C2433 drg no: P210 rev D

IDP GROUP 27 SPON STREET COVENTRY CV1 3BA
T: +44 (0)24 7652 7600 E: info@idpgroup.com
www.wearidp.com

This page is intentionally left blank